

# M Series

## Multi-Resolution Elapsed Timers

### Features

- All Standard Voltages
- Electric, Manual, or Non-Reset Available
- Varied Resolutions Available
- Varied Mounting Styles
- Many Options Available

### Description:

The M Series hours, minutes and seconds timer offers more voltages, reset options and more resolutions than any other electromechanical timer made today. Driven by a solid state circuit, with control line input that insures .05% accuracy, these timers provide instrument level performance.

### Specifications:

**Display:** 5 or 6 digit with reset 5 or 8 digit without reset

**Digit:** .160" high (each time designation has color-coded wheels for easy display)

**Operating Voltage:** 6, 12, 24, 48, 110VDC; 12, 24, 110, 220VAC

**Accuracy:** AC-based on line frequency, DC-crystal oscillator rated at .05% accuracy

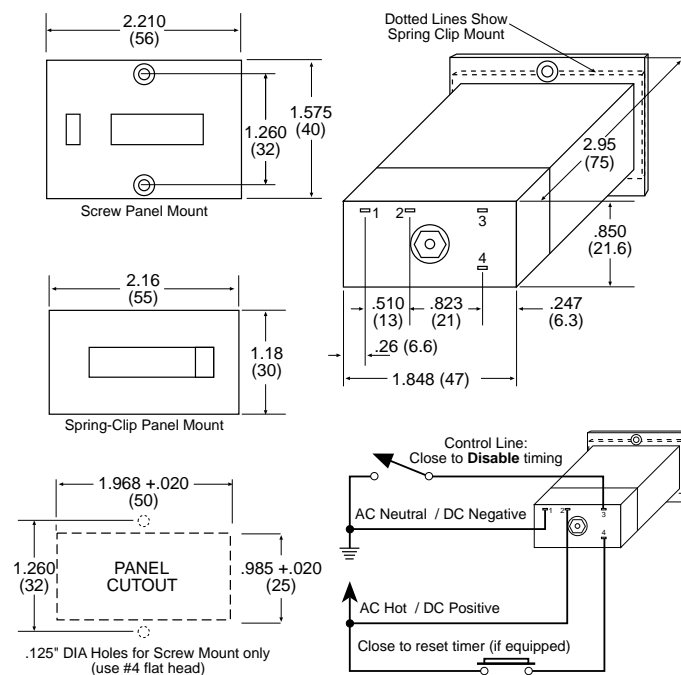
**Power Consumption:** 2.5 W typ., 9 W required for reset

**Supply Voltage:** ±10% of rated voltage

**Supply Ripple:** 10% maximum (DC units only)

**Temperature:** +32° F to +112° F (0° C to +45° C) operating

### Mounting:



### How To Order

<b>EXAMPLE:</b>	<b>MTH 16.</b>	<b>1</b>	<b>1</b>	<b>12VDC</b>	<b>V</b>
<b>Series</b>					
<b>AC with Reset:</b>					
MTH16. (Hours 1/100)					
MTM15. (Minutes 1/10)					
MTS16. (Seconds only)					
MTHMS16. (Hrs, Min, Sec)					
MTHM15. (Hrs, Min 1/10)					
<b>AC without Reset:</b>					
MTH18. (Hours 1/100)					
MTM17. (Minutes 1/10)					
MTS18. (Seconds only)					
MTHMS16. (Hrs, Min, Sec)					
MTHM15. (Hrs, Min 1/10)					
<b>DC with Reset:</b>					
MLTH15. (Hours 1/100)					
MLTM15. (Minutes 1/10)					
MLTS16. (Seconds only)					
MLTHMS16. (Hrs, Min, Sec)					
MLTHM15. (Hrs, Min 1/10)					
<b>DC without Reset:</b>					
MLTH17. (Hours 1/100)					
MLTM17. (Minutes 1/10)					
MLTS18. (Seconds only)					
MLTHMS16. (Hrs, Min, Sec)					
MLTHM15. (Hrs, Min 1/10)					

### Mounting:

- 1 = Screw panel
- 2 = Spring clip
- 0 = Rear Mount (for F1K1 Option Only)

### Reset:

- 0 = Non-reset
- 1 = Manual
- 2 = Electric
- 3 = Manual and electric

### Voltage (specify)

- DC - 6, 12, 24, 48, 100
- AC - 12, 24, 110, 220

### Available Options:

- TB - terminal block
- V - manual reset guard
- US - spade key reset
- ML - magnifying lens
- HT - extended temperature (+32°F to +140°F)
- F1 - screw panel mount frame w/ socket box (cutout W2.15" x H1.20")
- F1DK - transparent polycarbonate cover, keylock, tamper-proof.
- F1DV - transparent polycarbonate cover, knob closure
- F1K1 - silicone cover, 0 mount style

### Enclosures:

- N7 - explosion proof
- N4 - weatherproof
- N12 - dust and oil tight

TIMERS