

# CTR52U

## Multipurpose Device Counter, Rate Meter and Timer

### Features

- Universal, with dual functions, also suitable as maintenance counter
- 2 pulse or time counters for measuring daily and total values
- Count frequency 60 kHz
- Four dual functions in one device, saves on inventory costs
- Separate multiplication and scaling factor for pulse & frequency counter

### Specifications:

**Supply** 10 ... 30 V DC,

**voltage:** with reverse polarity protection

**Current consumption:**

max. 40 mA

**Display:** 6 digit red 7 segment LED display; 8 mm high

**Data backup:**

EEPROM

**Housing:** Dimensions 48 x 24 mm (1.89" x 0.945") according to DIN 43 700; RAL 7021, grey

**Polarity of Inputs:**

programmable, npn or pnp for all inputs

**Input resistance:**

appr. 5 k $\Omega$

**Counting frequency:**

max. 60 kHz, can be damped to 30 Hz

**Reset time:** 5 ms

**Resolution counter:**

0.001 sec ... 999999 hr

**Input switching level**

**Standard version:**

Low: 0 ... 0.2 x UB [V DC]

High: 0.6 x UB ... 30 V DC

**5 V version:**

Low 0 ... 2 V DC

High 12 ... 30 V DC



### Operating modes:

Electronic totalizer and frequency counter, counter with 2 totalizing ranges, totalizer and timer, timer with 2 time ranges

**Accuracy:** <0.1 % (Frequency display/Rate meter)

**Ambient temperature:**

-20 ... +50 °C (14°F ... 158°F), non-condensing

**Storage temperature:**

-25 ... +70 °C (-13F ... 158F)

**EMC:** according to EC EMC directive 89/36/EWG

**Immunity to interference:**

EN 61000-6-4/EN 55 011 class B

**Emitted interference:**

EN 61000-6-2

**Protection:** IP65 (from front)

**Weight:** appr. 50 g

### Ordering Information

Example CTR52U 0

Series: \_\_\_\_\_

Input Level: \_\_\_\_\_

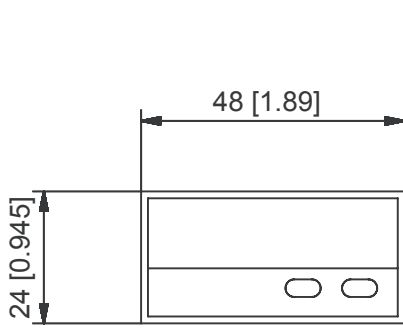
0= Standard

A= 5V level

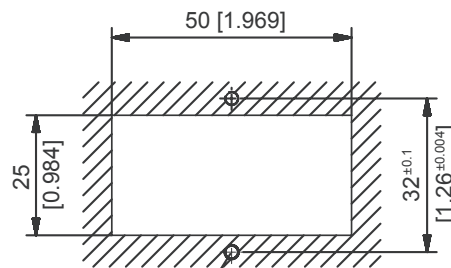
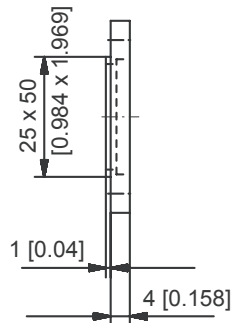
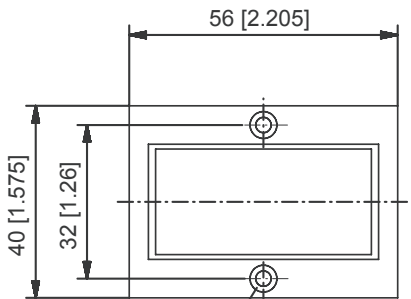
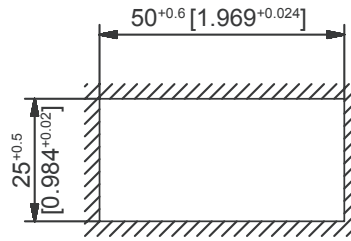
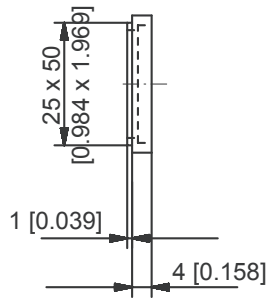
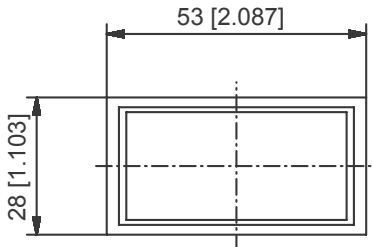
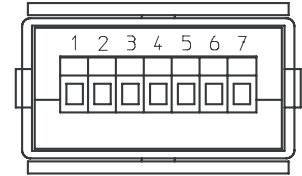
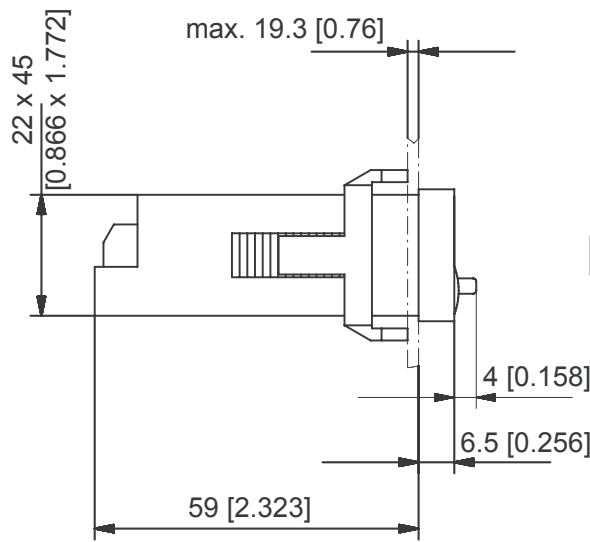
### Delivery Includes:

- 1 Digital display
- 1 Panel mounting clip
- 1 Bezel for screw mounting, panel cut out 50 x 25 mm [1.969 x 0.984"]
- 1 Bezel for clip mounting, panel cut out 50 x 25 mm [1.969 x 0.984"]
- 1 Seal
- 1 Instructions Manual

## Dimensions:



Panel cut-out:  
 $22.2^{+0.3} \times 45^{+0.6}$  mm  
 $[0.874^{+0.012} \times 1.772^{+0.024}]$



1

1 Counter sinking Af3, DIN 74

## Connections:

- 1 10 ... 30 V DC
- 2 0 V GND
- 3 INP A
- 4 INP B
- 5 Reset

