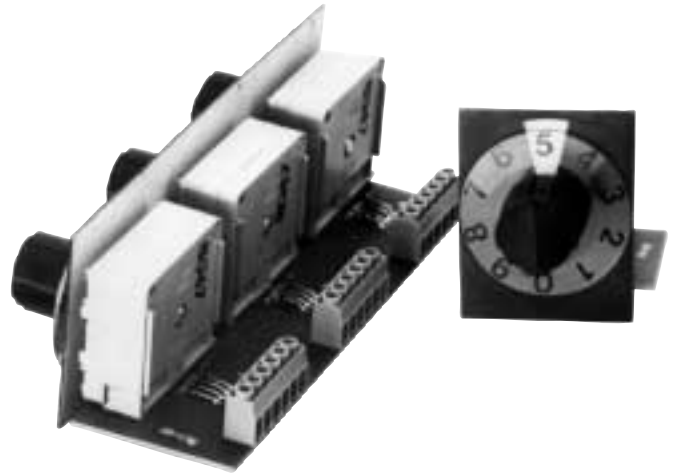


# RSW

## BCD Rotary Switches

### Features

- Withstands hose down when enclosed by NEMA 4X / IP65 housing
- Nontoxic exposed parts
- BCD output with or without diode blocking
- Large knob, easy to operate
- Large number display
- Heavy duty



### Application:

For inputting numerical data to counters and timers in PLC's. Suitable for all industries including food and pharmaceuticals.

### Description:

The KEP rotary switches are available in 1 through 6 decades. They are heavy duty switches numbered 0 through 9, and meets NEMA 4X/IP65 ratings. The BCD outputs, complete with blocking diode, are suitable for input connection to almost any programmable controller.

The rotary switches are used to input production count, correction factors, times, etc. into registers. Large numbers, stainless steel shafts, large knobs and Buna-N seals permit use in a variety of environments.

The switches are not affected by hose down, even with most caustic additives.

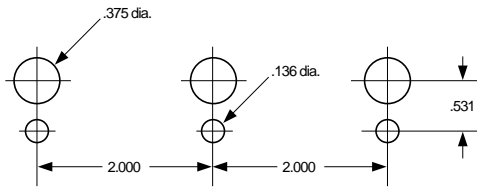
### Specifications:

No. of switching positions .....	10, numbered 0 through 9
Life .....	Greater than 500,000 detent operations at 25° C for a resistive load of 0.125 Amps at 48 VDC
Rotational Operating Force .....	14 to 24 ounce-inches
Operating temp range .....	67°F (-55°C) to +185°F (+85°C)
Electrical Ratings:	
Max. Recommended non switching load .....	0.250 Amps at 115 VAC or 48 VDC
Min recommended switching load .....	0.125 Amps at 115 VAC or 48 VDC
Insulation resistance .....	100 MOhms (min. dry)
Switch circuit resistance .....	0.100 Ohms max. initial 0.200 Ohms max. after life test
Size of digit .....	0.22"h; numbered 0 through 9
Number of decades .....	1 through 6
Color of digits .....	Black on white background
Knob diameter .....	0.83"
Connection .....	Screw terminal block

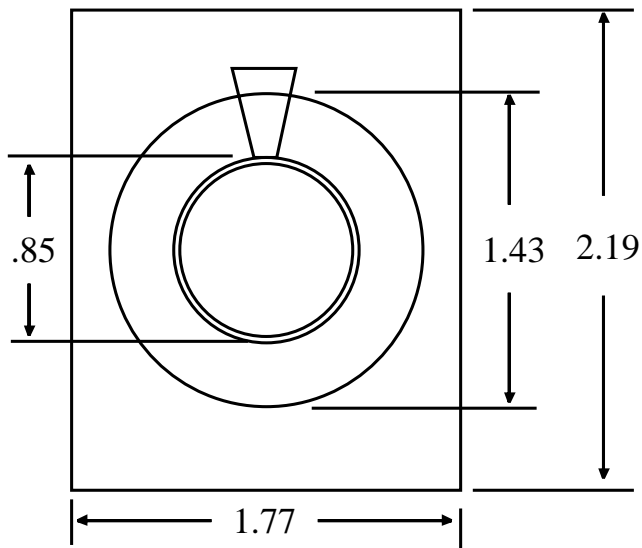
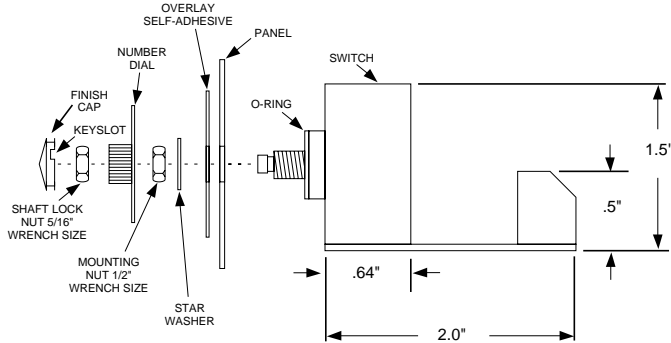
### MATERIALS

Seal .....	Buna-N Shaft Seals
Materials:	
Plastic .....	Thermo-Plastic, meets U.L. 94V-0
Circuit Disc .....	Glass epoxy, gold over nickel
Metals .....	Corrosion resistant stainless steel
Number Dial .....	Luran
Overlay .....	Adhesive backed Mylar
Recommended maximum panel thickness .....	up to 14 gauge, .075" (1.9mm)

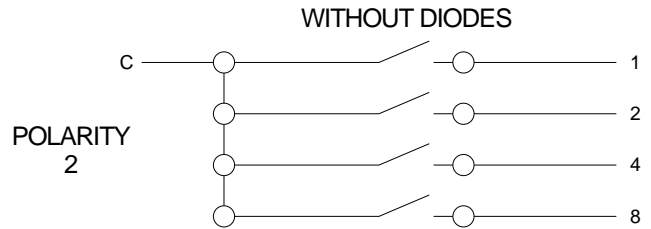
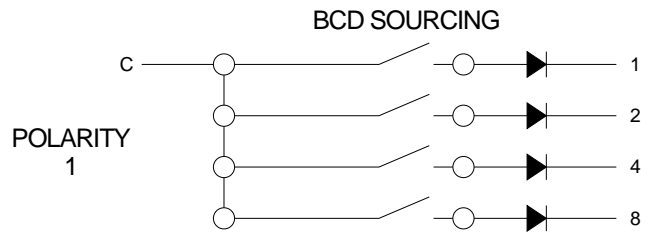
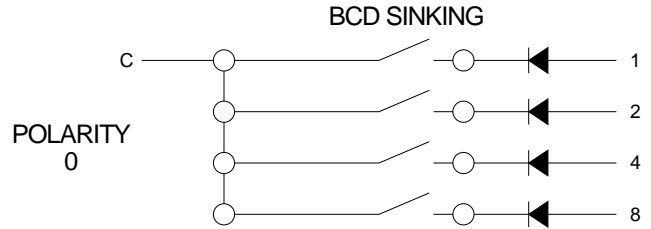
### Mounting:



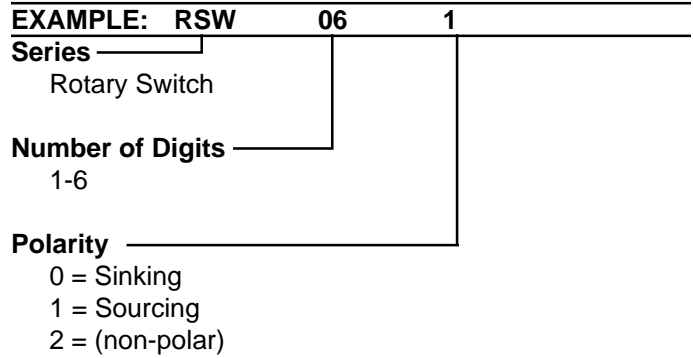
DIMENSION IS TYPICAL FOR HOW MANY SWITCHES ORDERED



### Polarities:



### How To Order:



ACCESSORIES